

MUIR BEACH

GOLDEN GATE NATIONAL RECREATION AREA



Dear Neighbors,

July 2010

The National Park Service is pleased to announce that on July 15 we will begin the second phase of Redwood Creek Restoration at Muir Beach. We greatly appreciate your cooperation and patience during last year's construction period and look forward to working together towards another successful season. The following information will give you a sense of what to expect this summer and fall.

What's next?

Project work to be completed this year includes:

- Restore and create part of the new creek alignment through Green Gulch pasture
- Remove gravel from the existing channel to place in the new creek alignment
- Upgrade the existing perimeter road as a new emergency access route
- Create a second pond for California red-legged frog breeding
- Realign a portion of the Coastal Trail, remove and restore the trail's steep leg, and re-contour the natural hill slope

What's the timeline?

- In general, work will be underway on site from July 15 through early November 2010.
- On Thursday, July 15, equipment for the road and trail work will be staged at the access road.
- On Monday, July 19, equipment for the creek restoration work will be staged along the levee road, leaving room for emergency access.
- Between July 19 and August 2, a contractor will set up equipment along the creek upstream of Pacific Way.
- Gravel upstream of Pacific Way will be moved under the Pacific Way Bridge by a conveyor belt beginning the first week of August. This operation is not expected to hold up traffic on the road.
- From August through October, the channel will be excavated and the road upgraded.

How will the project affect the area?

Our goal is to minimize any inconvenience to you and Park visitors. The plan for expected impacts includes:

- Noise: All construction work will occur between 8 am and 5 pm, and no work will be conducted on weekends.
- Traffic: Heavy equipment will be brought into the site during non-rush hour times (between 10am – 3pm)
- Trail and beach access:
 - Emergency access will be available at all times.
 - Middle Green Gulch Trail will be closed for the duration of the project (July 15-October 31), but periodic access will be provided for Green Gulch staff and residents and for equestrians to feed and water horse.
 - The Coastal Trail as it enters Muir Beach will be closed for just three days between August 7 and 22 – specific dates to be determined.
 - Access to the beach from the parking lot will remain available throughout the project.
- Parking: The Muir Beach parking lot will be unaffected. Contractors and staff will use alternative sites.

We will provide regular updates on temporary road and trail closures, including maps like the one enclosed.

How can I get more information and receive regular updates?

There are several ways you can remain informed through the duration of the project, including:

- Project Information Coordinators will be on site during work hours and on weekends to answer any questions.
- Email: Please contact trailsforever@parksconservancy.org with any questions and to sign up for regular updates.
- Phone: Call (415) 561-3054.
- Website: For a complete description of this year's work, go to www.nps.gov/goga/naturescience/muir-beach.htm

If you have a preference for how you would like to be contacted, please let us know by calling (415) 561-3054 or writing trailsforever@parksconservancy.org.

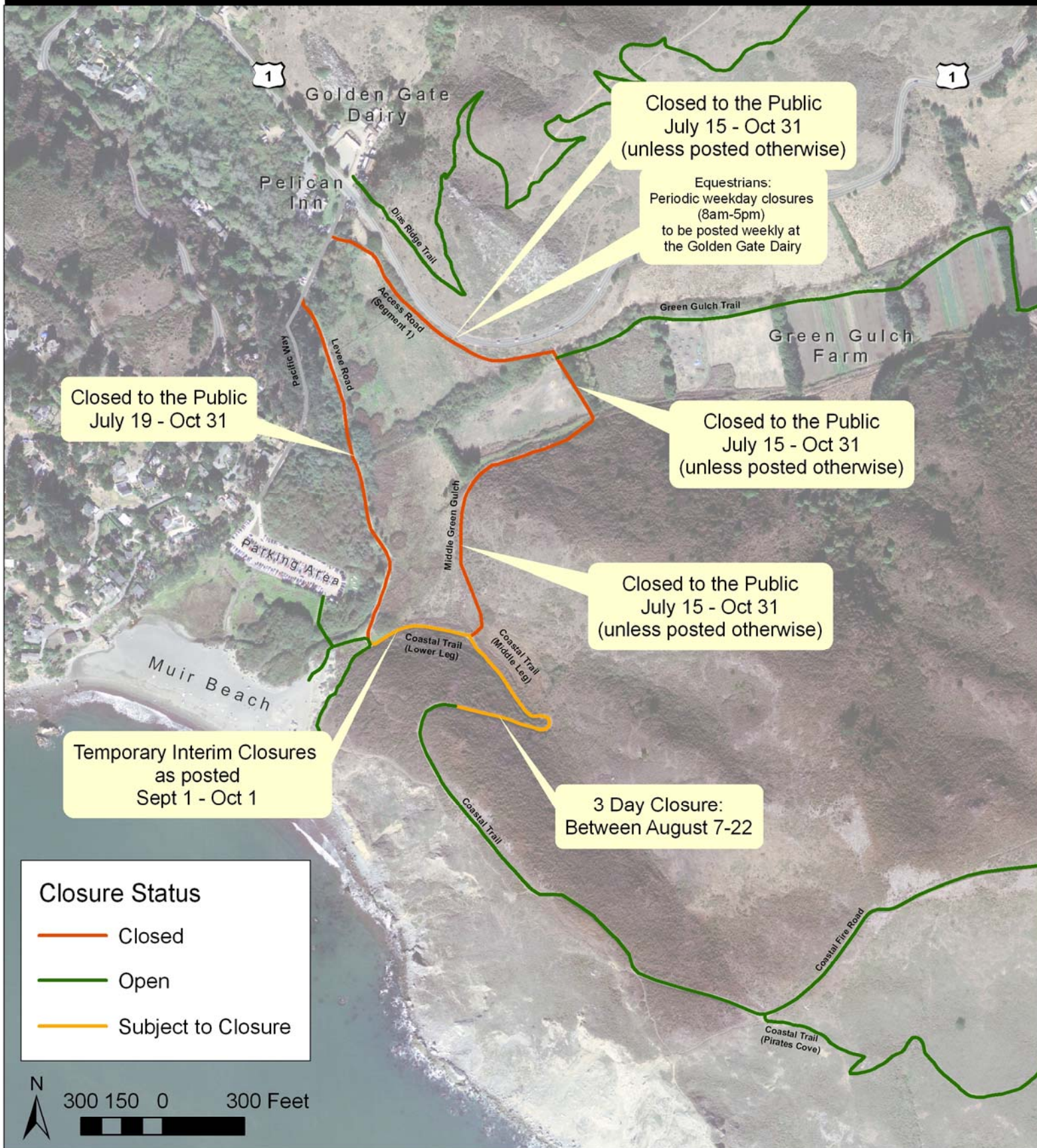
Thanks again for your continued patience – we appreciate your partnership and support.

NPS project manager, Carolyn Shoulders, and the Redwood Creek Restoration Team

Temporary Road and Trail Closures - 6/24/2010

Redwood Creek Restoration at Muir Beach

GOLDEN GATE NATIONAL RECREATION AREA



The closures are necessary to complete improvements to the emergency access road and for the Redwood Creek and wetland restoration activities at Muir Beach. The highlighted roads and trails will be subject to temporary closures between July 15 and October 31, 2010. Specific closure schedules and updates will be posted at www.parksconservancy.org. For more information, please contact 415-561-3054 or write trailsforever@parksconservancy.org.